



TO LET

Beachy Head Road, Meads
£3,500 pcm + security deposit

A beautifully presented 5-6 bedroom Detached period house.

- Detached Victorian House
- 5-6 Bedroom House
- 3 Bathrooms
- 3 Reception rooms
- Secluded Garden
- Large kitchen and separate utility room
- Elegant Period Features
- Excellent condition throughout
- Parking for several cars
- Excellent storage



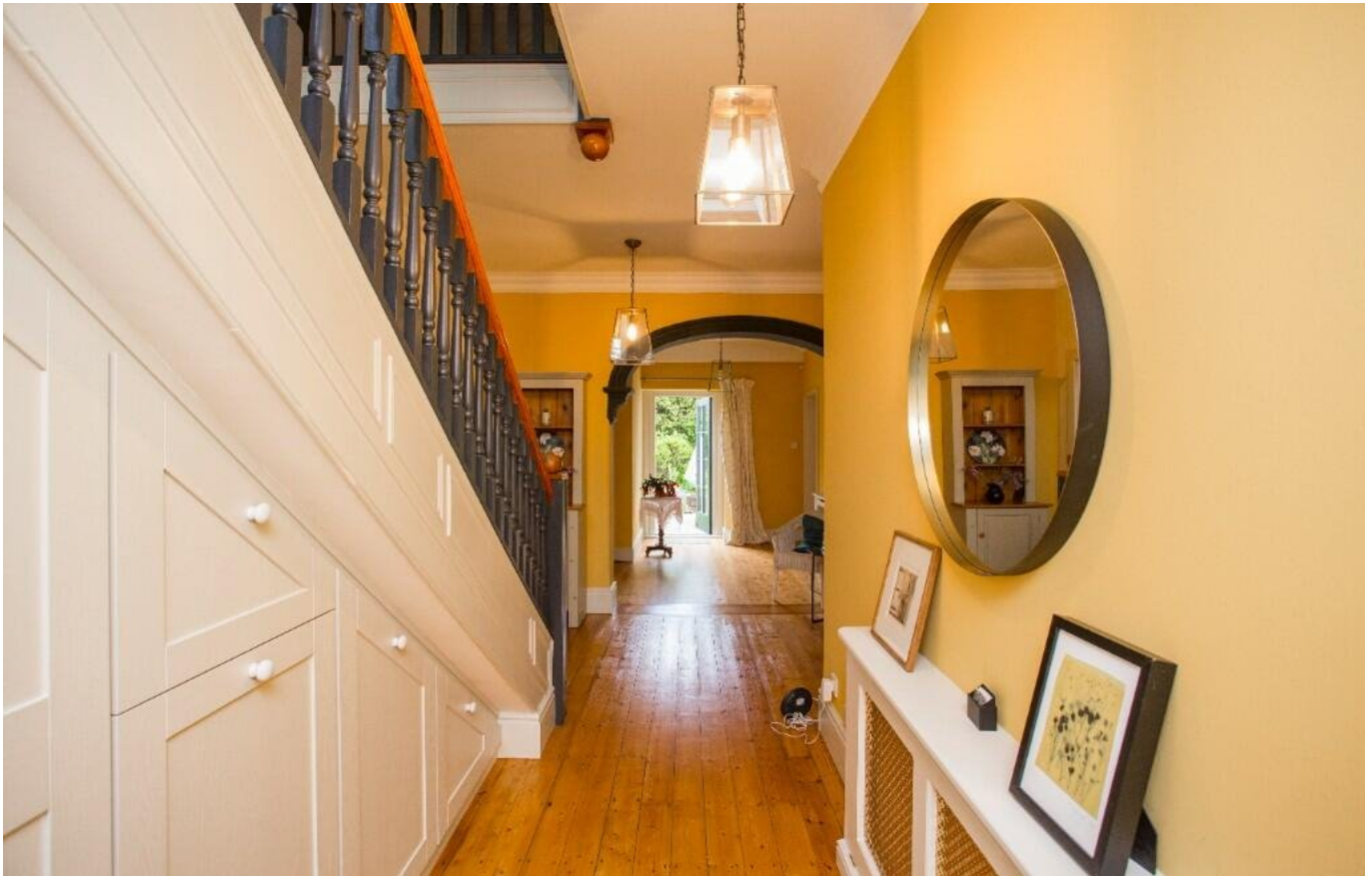
**£3,500 pcm +
security deposit**

Beachy Head Road,
Eastbourne,
East Sussex
BN20 7QS

A beautifully presented 5-6 bedroom Detached period house. Rarely available this substantial and imposing property provides spacious and elegant accommodation. Arranged over 2 floors the property provides 3 reception rooms plus a study and art/ childrens play area. A large kitchen /breakfast room plus utility room. On the first floor there 5 large double bedrooms and 3 bathrooms. The house also provides excellent storage, There is an external workshop, boiler room and garage. The garden is secured and attractive with areas of lawn and terrace. Available immediately.

>> Key Features

- Detached Victorian House
- 5-6 Bedroom House
- 3 Bathrooms
- 3 Reception rooms
- Large kitchen and separate utility
- Elegant Period Features
- Excellent condition throughout
- Parking for several cars
- Secluded Garden
- Excellent storage







McGregor Properties Ltd
48 Meads Street, Meads
Eastbourne, BN20 7RH
Tel : 01323 561045 Fax :