

An independent production by  
KENSINGTON'S FINEST SALES & LETTINGS AGENCY



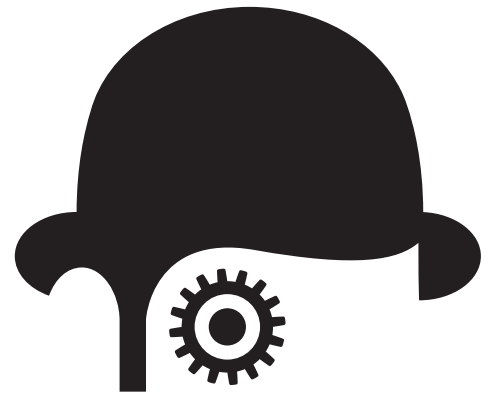
A London Premiere  
NOW SHOWING



NOW SHOWING

IMPERIAL WHARF  
FULHAM, SW6  
LET £525 PER WEEK

●  
CONTACT US  
020 7881 8080



CLOCKWORK PINK

## SYNOPSIS

This light bright and contemporary two bedroom apartment is ideally located on the 5th floor of the highly sought after Imperial Wharf Development.



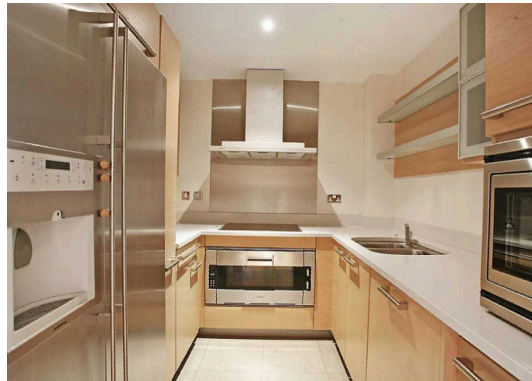
FLOOR  
5

FURNISHED /  
UNFURNISHED  
FURNISHED

BEDROOMS  
2

BATHROOMS  
2

NEAREST TUBE  
FULHAM BROADWAY



## ENERGY RATING C

Go to our website to view the Energy Efficiency Rating and Environmental Impact Rating chart for this property.



## TENANCY FEES

Tenants will be liable to pay the following fees to Champions unless otherwise agreed in writing:

TENANCY CONTRACT FEE  
£250 + VAT

CHAMPIONS, FOR THEMSELVES AND THE VENDORS OR LESSORS OF THIS PROPERTY, WHOSE AGENTS THEY ARE GIVE NOTICE THAT:

i) These particulars set out a general outline only for the guidance of intended purchasers or lessees and do not constitute, nor constitute any part of, an offer or contract.  
ii) Measurements are given to the following accuracy; rooms are measured to the nearest 90mm and the maximum appropriate measurements are normally given. Rooms of irregular size will be identified in the description or floor plans.  
iii) Any mechanical or electrical device has not been tested and cannot be guaranteed. Similarly services have not been tested and cannot be guaranteed.  
iv) Some of the photographs taken for this brochure have been taken with a camera using a wide angle lens and are believed to be a fair representation of the property at the time of going to the market. Neither the vendor, Champions nor any person in the employment of Champions has any authority to make or give any representation or warranty whatsoever in relation to this property.