

An independent production by
KENSINGTON'S FINEST SALES & LETTINGS AGENCY



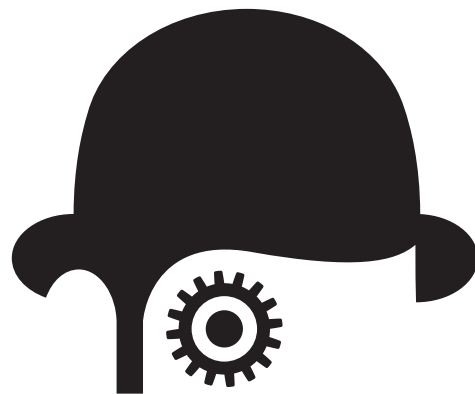
A London Premiere

NOW SHOWING



NOW SHOWING

LONGRIDGE ROAD
EARLS COURT, SW5
£525 PER WEEK



●
CONTACT US
020 7881 8080
lettings@champions.co.uk

CLOCKWORK PINK

ON LOCATION IN

LONGRIDGE ROAD

PRESENTING

A TWO BEDROOM APARTMENT

SYNOPSIS

Situated on the first floor of a Victorian conversion this beautiful two double bedroom apartment is not to be missed. The property comprises impressive reception room with high ceilings, floor to ceiling windows, wood floors and doors opening onto a balcony, stylish open-plan modern kitchen, fully tiled large luxury bathroom with speakers, master bedroom, second bedroom with excellent storage and sleeping gallery.

FULL CAST

ROAD NAME
LONGRIDGE ROAD

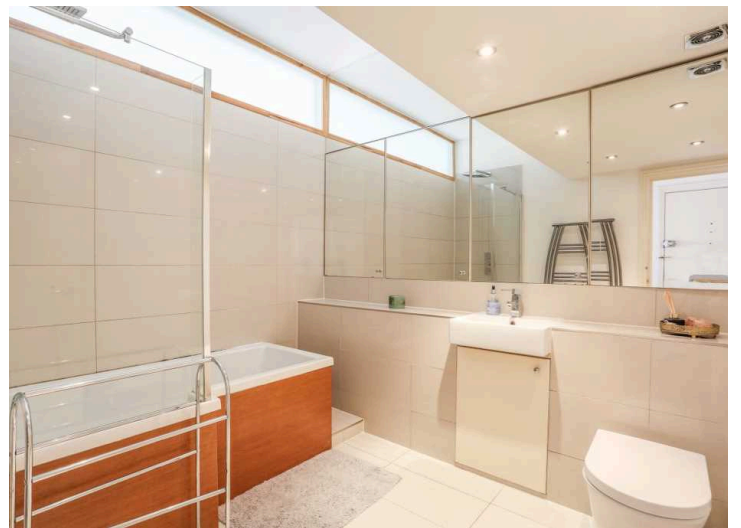
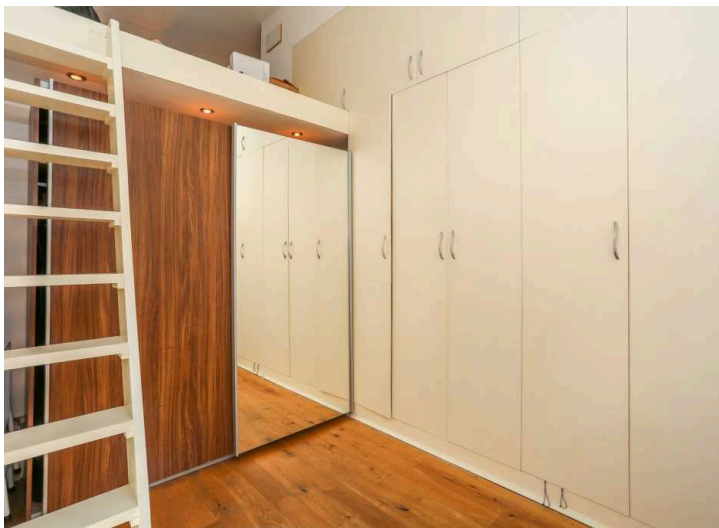
PROPERTY TYPE
APARTMENT

BEDROOMS
2

BATHROOMS
1

ENERGY RATING
D

Go to our website to view the Energy Efficiency Rating and Environmental Impact Rating chart for this property.



TENANCY FEES

Tenants will be liable to pay the following fees to Champions unless otherwise agreed in writing:

TENANCY CONTRACT FEE
£250 + VAT

REFERENCING FEE
£35 + VAT OR £35 + VAT
INDIVIDUAL COMPANY

**RENEWAL
ADMINISTRATION FEE**
£150 + VAT

This is only chargeable if you renew or extend your tenancy beyond the end of the initial term. As well as the above, tenants are expected to provide a deposit of six weeks' rent prior to the start of their tenancy and pay for the cost of cleaning and inventory check-out at the end of their tenancy.



57C Longridge Road,
Approx. Gross Internal Area *
778 Ft² - 72.28 M²

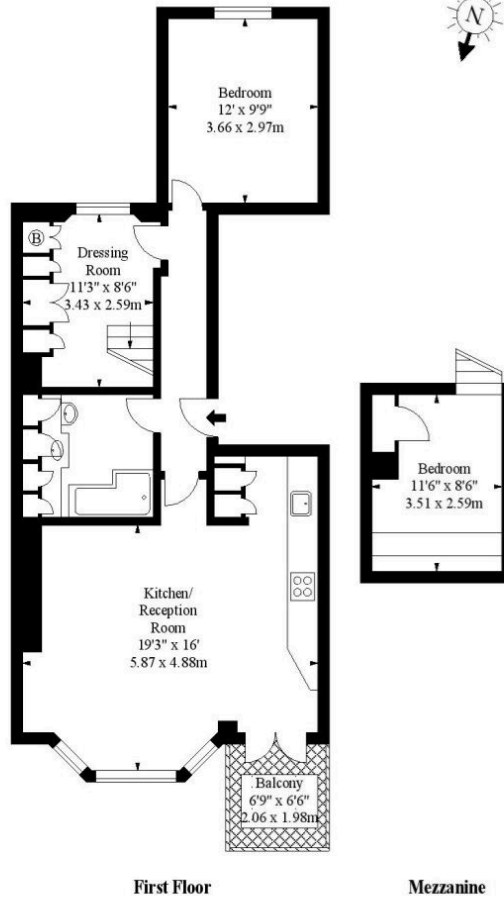


Illustration For Identification Purposes Only. Not To Scale

* As Defined by RICS - Code of Measuring Practice

© International Floorplans.
Tel 0094 335625958
www.ifplk

CHAMPIONS, FOR THEMSELVES AND THE VENDORS OR LESSORS OF THIS PROPERTY, WHOSE AGENTS THEY ARE GIVE NOTICE THAT:

i) These particulars set out a general outline only for the guidance of intended purchasers or lessees and do not constitute, nor constitute any part of, an offer or contract.

ii) Measurements are given to the following accuracy: rooms are measured to the nearest 90mm and the maximum appropriate measurements are normally given. Rooms of irregular size will be identified in the description or floor plans.

iii) Any mechanical or electrical device has not been tested and cannot be guaranteed. Similarly services have not been tested and cannot be guaranteed.

iv) Some of the photographs taken for this brochure have been taken with a camera using a wide angle lens and are believed to be a fair representation of the property at the time of going to the market. Neither the vendor, Champions nor any person in the employment of Champions has any authority to make or give any representation or warranty whatsoever in relation to this property.