

# MoveNow Properties



WAKEFIELD OFFICE:

Address: 10 Rishworth Street, Wakefield, WF1 3BY

Web: [www.movenowproperties.com](http://www.movenowproperties.com)

Tel: 01924 249349

Email: [info@movenowproperties.com](mailto:info@movenowproperties.com)

BARNSELY OFFICE:

Address: 41A Towngate, Mapplewell, S75 6AS

Web: [www.movenowproperties.com](http://www.movenowproperties.com)

Tel: 01226 593477

Email: [mapplewell@movenowproperties.com](mailto:mapplewell@movenowproperties.com)

**FOR SALE**

**Spring Street, Barnsley,**

**S70 1PE**

**2 Bedroom, Terrace**

**£85,000**



Movenowproperties offer this mid terrace property for sale. Boasting a comfortable living room, well-appointed kitchen, cellar, two generously proportioned bedrooms, and a bathroom, this residence presents an ideal opportunity for property investors or those embarking on their journey as first-time buyers.

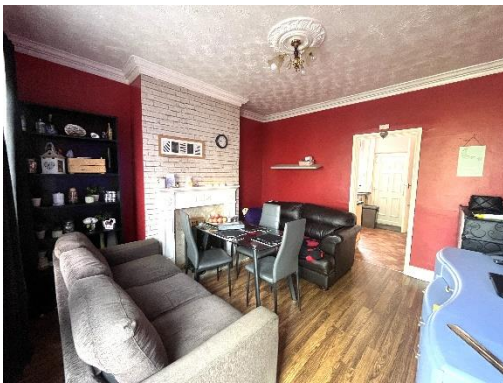
- Two Generous Bedrooms
  - Cosy Living Room
  - Well-Equipped Kitchen
  - Convenient Cellar
  - On Street Parking
- Perfect for First-Time Buyers or Investors

### Accommodation Briefly Comprises:

#### Living Room:

**Measurements: 12' 1" x 12' 1" (3.69m x 3.69m)**

Step into the welcoming living space adorned with wood-effect laminate flooring. Double glazed window overlook the front. The focal point is a chimney breast accommodating a fireplace with an electric fire and radiator.



#### Kitchen:

**Measurements: 9' 11" x 9' 0" (3.03m x 2.74m)**

A well-equipped kitchen featuring a range of wall and base units complemented by a tiled splash back. The workspace includes a sink and drainer with a mixer tap, along with plumbing for a washing machine. An electric oven and hob, complete with a cooker hood above. A double glazed window overlooking the rear and a UPVC door providing rear access.



#### Stairs and Landing:

Ascend the stairs with carpet flooring and handrail, leading to the bedrooms and bathroom.

**Bedroom 1:****Measurements: 13' 0" x 8' 9" (3.96m x 2.66m)**

A double bedroom with carpet flooring offering a double glazed window overlook the front and a radiator.

**Bedroom Two:****Measurements: 9' 1" x 8' 4" (2.77m x 2.55m)**

Another generously sized bedroom with carpet flooring offering a double glazed window overlook the rear and a radiator.

**Bathroom:****Measurements: 8' 10" x 5' 0" (2.70m x 1.52m)**

A 3 piece suite which includes low flush wc, pedestal wash basin, bath with overhead electric shower and radiator.



**Outside:**

Parking is available on the street in front of the property. To the rear, a small patio area provides space for outdoor relaxation.

**Mobile Coverage**

Three

O2

Vodafone

EE

**Satellite / Fibre TV Availability**

BT

Sky

**Parking**

On Street Parking

**Council Tax**

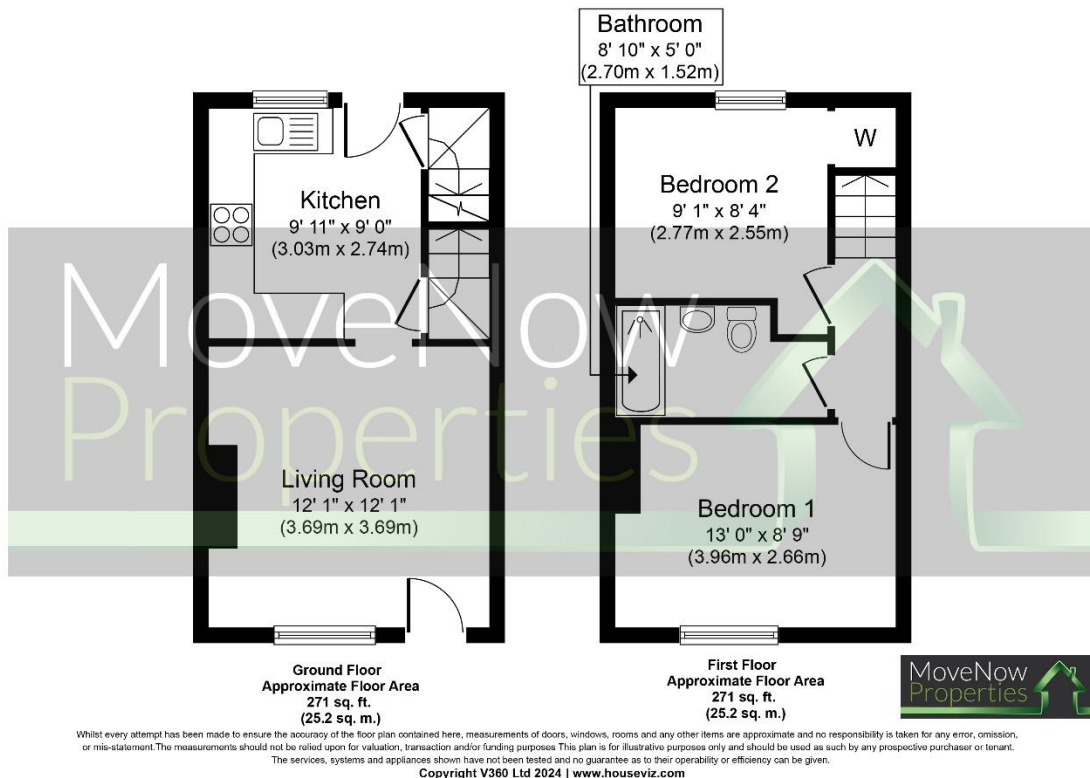
Band A

**Tenure**

Freehold

## Floor plans

These floor plans are intended as a rough guide only and are not to be intended as an exact representation and should not be scaled. We cannot confirm the accuracy of the measurements or details of these floor plans.



## Viewings

For further information or to arrange a viewing please contact our offices directly.

## Free valuations

Considering selling or letting your property?

For a free valuation on your property please do not hesitate to contact us.

## DISCLAIMER:

The details shown on this website are a general outline for the guidance of intending purchasers, and do not constitute, nor constitute part of, an offer or contract or sales particulars. All descriptions, dimensions, references to condition and other details are given in good faith and are believed to be correct but any intending purchasers should not rely on them as statements or representations of fact but must satisfy themselves by inspection, searches, survey, enquiries or otherwise as to their correctness. We have not been able to test any of the building service installations and recommend that prospective purchasers arrange for a qualified person to check them before entering into any commitment. Further, any reference to, or use of any part of the properties is not a statement that any necessary planning, building regulations or other consent has been obtained. All photographs shown are indicative and cannot be guaranteed to represent the complete interior scheme or items included in the sale. No person in our employment has any authority to make or give any representation or warranty whatsoever in relation to this property.