



Brookland Rise

3 Bedroom

£460 pw

London, London Hampstead Garden Suburb

KINGSLEYS



4 Falloden Court Brookland Rise

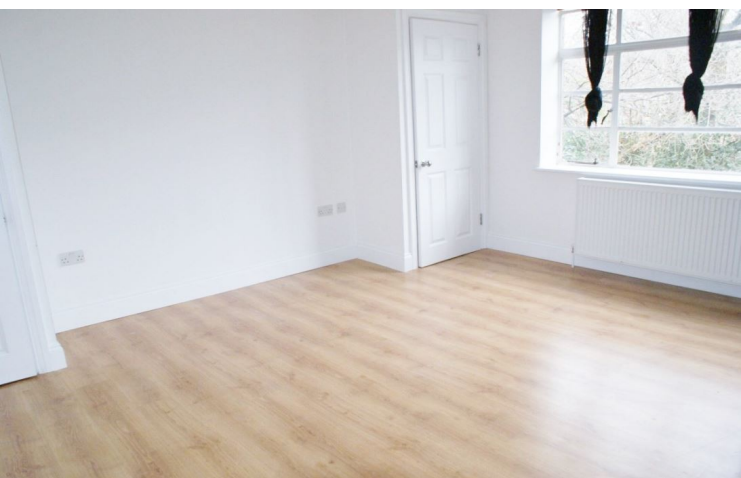
Description

- Purpose Built Block
- 1 Reception
- Energy Rating : C
- Shower
- Washing Machine
- 3 Beds
- 1 Bathroom
- Unfurnished
- Garage
- Gas Central Heating

Unfurnished 3 double bedroom first floor flat in HGS. The flat comprises larger than average reception room, modern fitted kitchen, family bathroom & separate power shower. The flat also benefits from built in storage & a garage. The property is minutes walk from Brooklands School and ideal for families. East Finchley Tube Station is approximately a 15 minute walk away. EPC C69. 94sqm; 1011.81sqft.



Accommodation Comprises:



Certificate Number :

Score	Energy rating	Current	Potential
92+	A		
81-91	B		83
69-80	C	72	
55-68	D		
39-54	E		
21-38	F		
1-20	G		

<https://find-energy-certificate.digital.communities.gov.uk/energy-certificate/>

Our Fees

KINGSLEYS

92 Golders Green Road,
London, NW11 8HB

telephone : 020-8458-3333

email : office@kingsleys.uk

www.kingsleys-estates.co.uk

NB: Although we believe these particulars to be correct with the information provided by the Landlord, they cannot be guaranteed. No services have been tested and we must suggest that, if any item is of a specific importance to you, that you should make your own enquiries. Please note that measurements have been taken using a sonic tape which may only be accurate to + 6". Metric equivalents are shown to provide an approximate guide only & (TBC) = To Be Confirmed.