



THE CLOISTER

Harley Street, Marylebone

£1,800,000



The Cloister

106 Great Portland Street, London, W1W 6PF
T. +44 (0)20 7436 6210 F. +44 (0)20 7436 7261
E. lettings@thecloisteruk.com W. www.thecloisteruk.com



Harley Street, Marylebone

£1,800,000

Stunning large three bedroom apartment for sale located in the fashionable Marylebone.

This property comprises of three double bedrooms, two with en-suite, reception room, kitchen and main bathrooms. This property also benefits from 900 sq. ft.

This property is ideally situated for the diverse amenities of the Marylebone High Street and is within walking distance to the West end; where there are a good range of shops, bars and restaurants. Nearby is also the University of Westminster and University College London as well as Regents College. This property is situated moments from Regents Park.



The Cloister

106 Great Portland Street, London, W1W 6PF
T. +44 (0)20 7436 6210 F. +44 (0)20 7436 7261
E. lettings@thecloisteruk.com W. www.thecloisteruk.com



Harley Street, Marylebone

£1,800,000



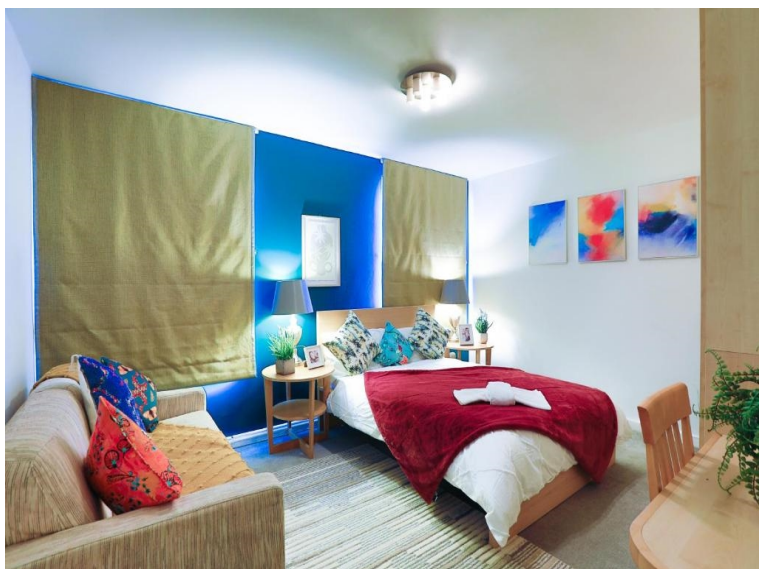
The Cloister

106 Great Portland Street, London, W1W 6PF
T. +44 (0)20 7436 6210 F. +44 (0)20 7436 7261
E. lettings@thecloisteruk.com W. www.thecloisteruk.com



Harley Street, Marylebone

£1,800,000



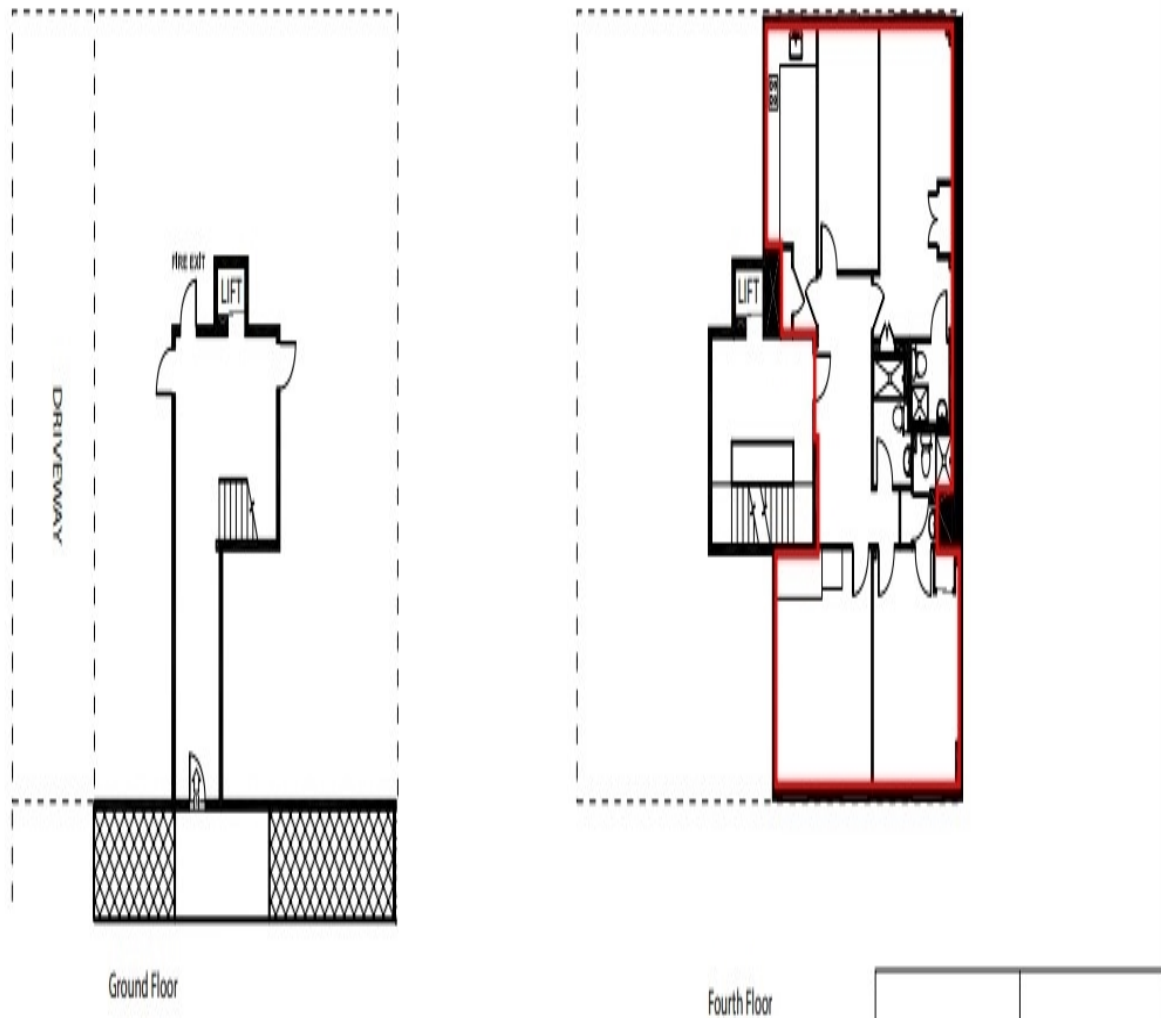
The Cloister

106 Great Portland Street, London, W1W 6PF
T. +44 (0)20 7436 6210 F. +44 (0)20 7436 7261
E. lettings@thecloisteruk.com W. www.thecloisteruk.com



Harley Street, Marylebone

£1,800,000



Important Notices:

Particulars: These particulars are not an offer or contract, nor part of one. You should not rely on statements by The Cloister in the particulars or by word of mouth or in writing ("information") as being factually accurate about the property, its condition or its value. Neither The Cloister nor any joint agent has any authority to make any representations about the property, and accordingly any information given is entirely without responsibility on the part of the agents, seller(s), lessor(s) or landlord(s). Any areas, measurements or distances are approximate. The text, photographs and plans are for guidance only and are not necessarily comprehensive. Regulations etc: Any reference to alterations to, or use of, any part of the property does not mean that any necessary planning, building regulations or other consent has been obtained. A buyer, lessee or tenant must find out by inspection or in other ways that these matters have been properly dealt with and that all information is correct. All items usually known as tenant's fixtures and fittings whether mentioned or not in these particulars are excl

The Cloister

106 Great Portland Street, London, W1W 6PF
T. +44 (0)20 7436 6210 F. +44 (0)20 7436 7261
E. lettings@thecloisteruk.com W. www.thecloisteruk.com

