



# THE CLOISTER

Denmark Place, Soho

£3,932 pw + security deposit



A Luxurious 1 bedroom apartment with butler service, kitchenette when required, wifi and perfect location in the heart of the city.

## The Cloister

106 Great Portland Street, London, W1W 6PF  
T. +44 (0)20 7436 6210 F. +44 (0)20 7436 7261  
E. [lettings@thecloisteruk.com](mailto:lettings@thecloisteruk.com) W. [www.thecloisteruk.com](http://www.thecloisteruk.com)



## Denmark Place, Soho

£3,932 pw + security deposit

Welcome to this luxurious rental located in a convenient and desirable area! This property is perfect for individuals or couples looking for a luxurious and comfortable accommodation. The property offers a spacious one-bedroom apartment and the bathroom comes with a stand-alone bathtub, as well as a shower.

This property also offers a butler service. In addition, you'll have access to free Wi-Fi and air conditioning throughout the property.

The area is vibrant and bustling with plenty of restaurants, bars, cafes, and shops right on your doorstep. If you're looking for an idyllic escape in a convenient location, then this is the perfect place for you! Don't miss out on this amazing opportunity and book now!

---

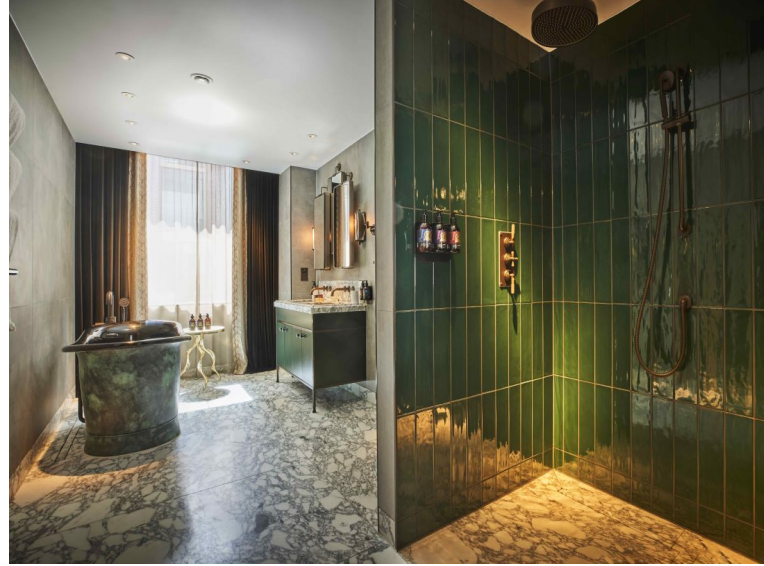
### The Cloister

106 Great Portland Street, London, W1W 6PF  
T. +44 (0)20 7436 6210 F. +44 (0)20 7436 7261  
E. [lettings@thecloisteruk.com](mailto:lettings@thecloisteruk.com) W. [www.thecloisteruk.com](http://www.thecloisteruk.com)



Denmark Place, Soho  
£3,932 pw + security deposit

---



---

**The Cloister**

106 Great Portland Street, London, W1W 6PF  
T. +44 (0)20 7436 6210 F. +44 (0)20 7436 7261  
E. [lettings@thecloisteruk.com](mailto:lettings@thecloisteruk.com) W. [www.thecloisteruk.com](http://www.thecloisteruk.com)



Denmark Place, Soho  
£3,932 pw + security deposit

---

---

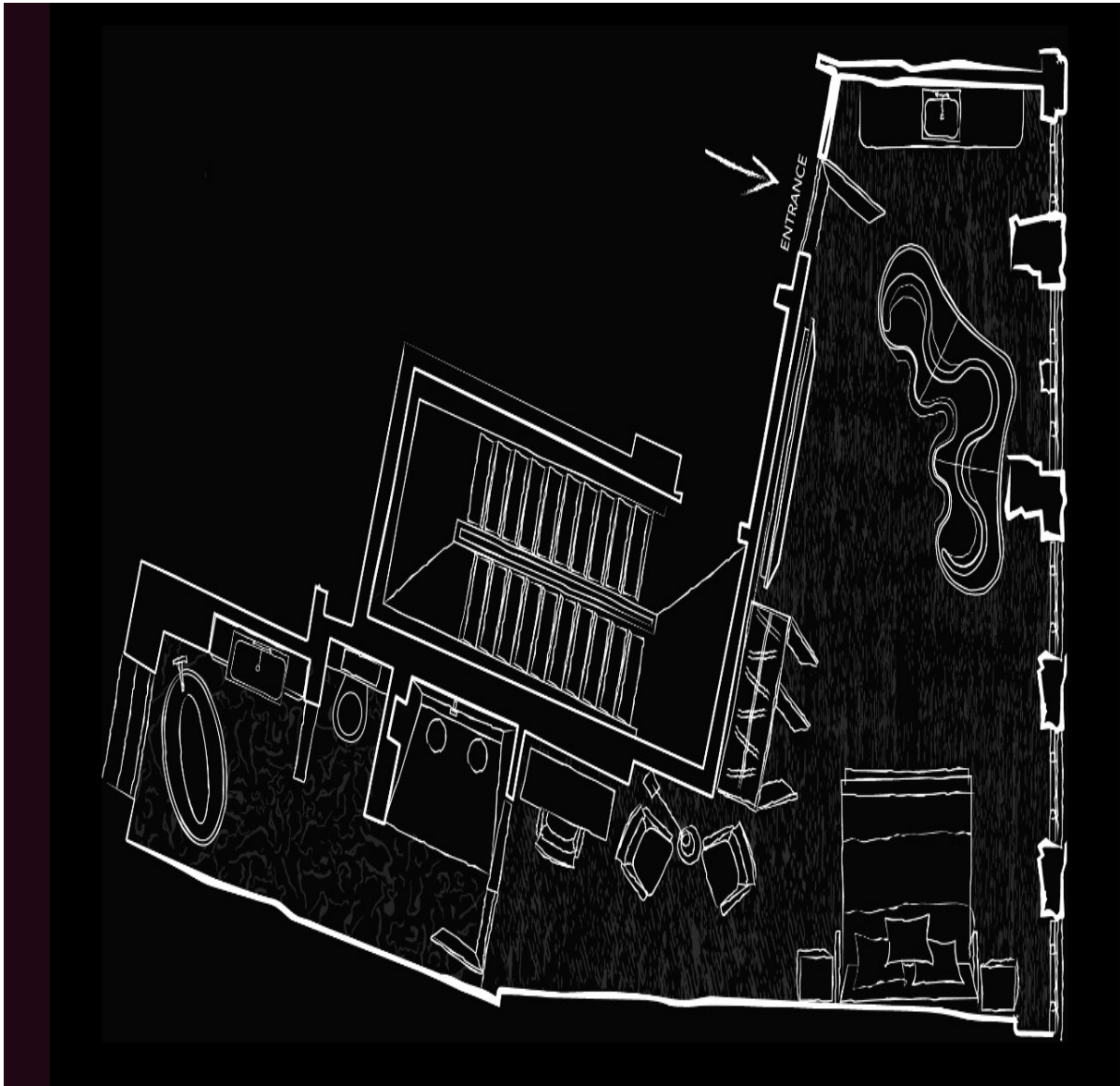
**The Cloister**

106 Great Portland Street, London, W1W 6PF  
T. +44 (0)20 7436 6210 F. +44 (0)20 7436 7261  
E. [lettings@thecloisteruk.com](mailto:lettings@thecloisteruk.com) W. [www.thecloisteruk.com](http://www.thecloisteruk.com)



# Denmark Place, Soho

£3,932 pw + security deposit



## Important Notices:

Particulars: These particulars are not an offer or contract, nor part of one. You should not rely on statements by The Cloister in the particulars or by word of mouth or in writing ("information") as being factually accurate about the property, its condition or its value. Neither The Cloister nor any joint agent has any authority to make any representations about the property, and accordingly any information given is entirely without responsibility on the part of the agents, seller(s), lessor(s) or landlord(s). Any areas, measurements or distances are approximate. The text, photographs and plans are for guidance only and are not necessarily comprehensive. Regulations etc: Any reference to alterations to, or use of, any part of the property does not mean that any necessary planning, building regulations or other consent has been obtained. A buyer, lessee or tenant must find out by inspection or in other ways that these matters have been properly dealt with and that all information is correct. All items usually known as tenant's fixtures and fittings whether mentioned or not in these particulars are excl

## The Cloister

106 Great Portland Street, London, W1W 6PF  
T. +44 (0)20 7436 6210 F. +44 (0)20 7436 7261  
E. [lettings@thecloisteruk.com](mailto:lettings@thecloisteruk.com) W. [www.thecloisteruk.com](http://www.thecloisteruk.com)

