



# THE CLOISTER

Rex Place, Mayfair

£6,500 pw + security deposit



## The Cloister

106 Great Portland Street, London, W1W 6PF  
T. +44 (0)20 7436 6210 F. +44 (0)20 7436 7261  
E. [lettings@thecloisteruk.com](mailto:lettings@thecloisteruk.com) W. [www.thecloisteruk.com](http://www.thecloisteruk.com)



# Rex Place, Mayfair

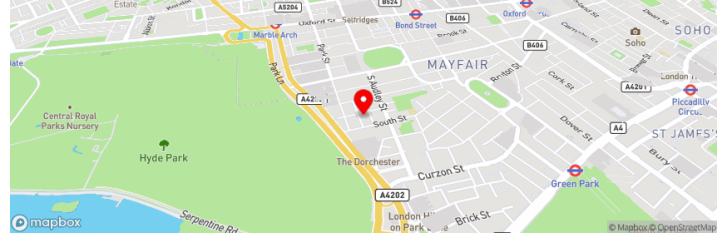
£6,500 pw + security deposit

Nestled in the heart of Mayfair, this exquisite residence at Rex Place exemplifies refined luxury living. Boasting four generously proportioned bedrooms, each adorned with tasteful finishes and ample natural light, this home offers an abundance of space for both relaxation and entertainment.

The four bathrooms are meticulously designed with modern fixtures and elegant touches. The reception area exudes an air of sophistication. This residence promises a lavish lifestyle in one of London's most prestigious neighborhoods.

With its prime location in Mayfair, residents will enjoy easy access to the vibrant cultural scene, world-class dining, and prestigious shopping boutiques that the area has to offer. Additionally, Rex Place benefits from excellent transport links, connecting you to the rest of London and beyond.

Elegance, comfort, and convenience converge in this splendid property, making it an exceptional opportunity for those seeking the pinnacle of sophisticated urban living.



---

## The Cloister

106 Great Portland Street, London, W1W 6PF  
T. +44 (0)20 7436 6210 F. +44 (0)20 7436 7261  
E. [lettings@thecloisteruk.com](mailto:lettings@thecloisteruk.com) W. [www.thecloisteruk.com](http://www.thecloisteruk.com)



Rex Place, Mayfair  
£6,500 pw + security deposit

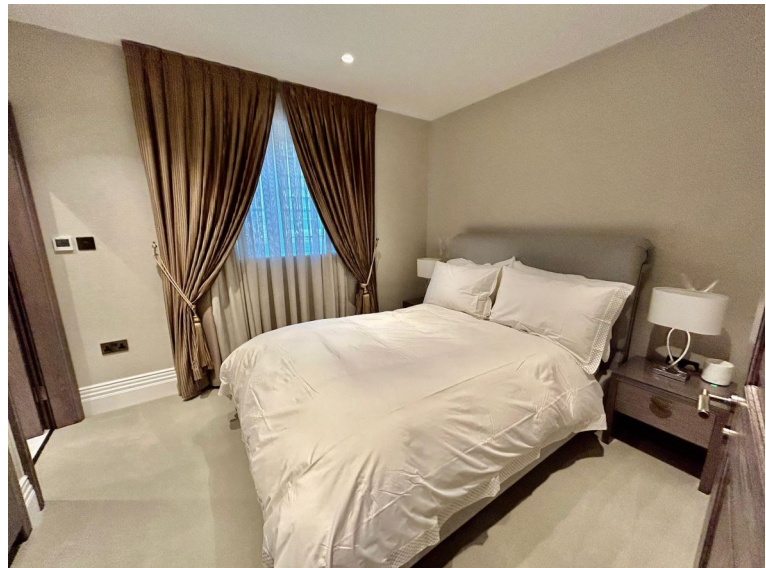


**The Cloister**

106 Great Portland Street, London, W1W 6PF  
T. +44 (0)20 7436 6210 F. +44 (0)20 7436 7261  
E. [lettings@thecloisteruk.com](mailto:lettings@thecloisteruk.com) W. [www.thecloisteruk.com](http://www.thecloisteruk.com)



Rex Place, Mayfair  
£6,500 pw + security deposit



**The Cloister**

106 Great Portland Street, London, W1W 6PF  
T. +44 (0)20 7436 6210 F. +44 (0)20 7436 7261  
E. [lettings@thecloisteruk.com](mailto:lettings@thecloisteruk.com) W. [www.thecloisteruk.com](http://www.thecloisteruk.com)



Rex Place, Mayfair  
£6,500 pw + security deposit

---

**Important Notices:**

Particulars: These particulars are not an offer or contract, nor part of one. You should not rely on statements by The Cloister in the particulars or by word of mouth or in writing ("information") as being factually accurate about the property, its condition or its value. Neither The Cloister nor any joint agent has any authority to make any representations about the property, and accordingly any information given is entirely without responsibility on the part of the agents, seller(s), lessor(s) or landlord(s). Any areas, measurements or distances are approximate. The text, photographs and plans are for guidance only and are not necessarily comprehensive. Regulations etc: Any reference to alterations to, or use of, any part of the property does not mean that any necessary planning, building regulations or other consent has been obtained. A buyer, lessee or tenant must find out by inspection or in other ways that these matters have been properly dealt with and that all information is correct. All items usually known as tenant's fixtures and fittings whether mentioned or not in these particulars are excl

---

**The Cloister**

106 Great Portland Street, London, W1W 6PF  
T. +44 (0)20 7436 6210 F. +44 (0)20 7436 7261  
E. [lettings@thecloisteruk.com](mailto:lettings@thecloisteruk.com) W. [www.thecloisteruk.com](http://www.thecloisteruk.com)

