



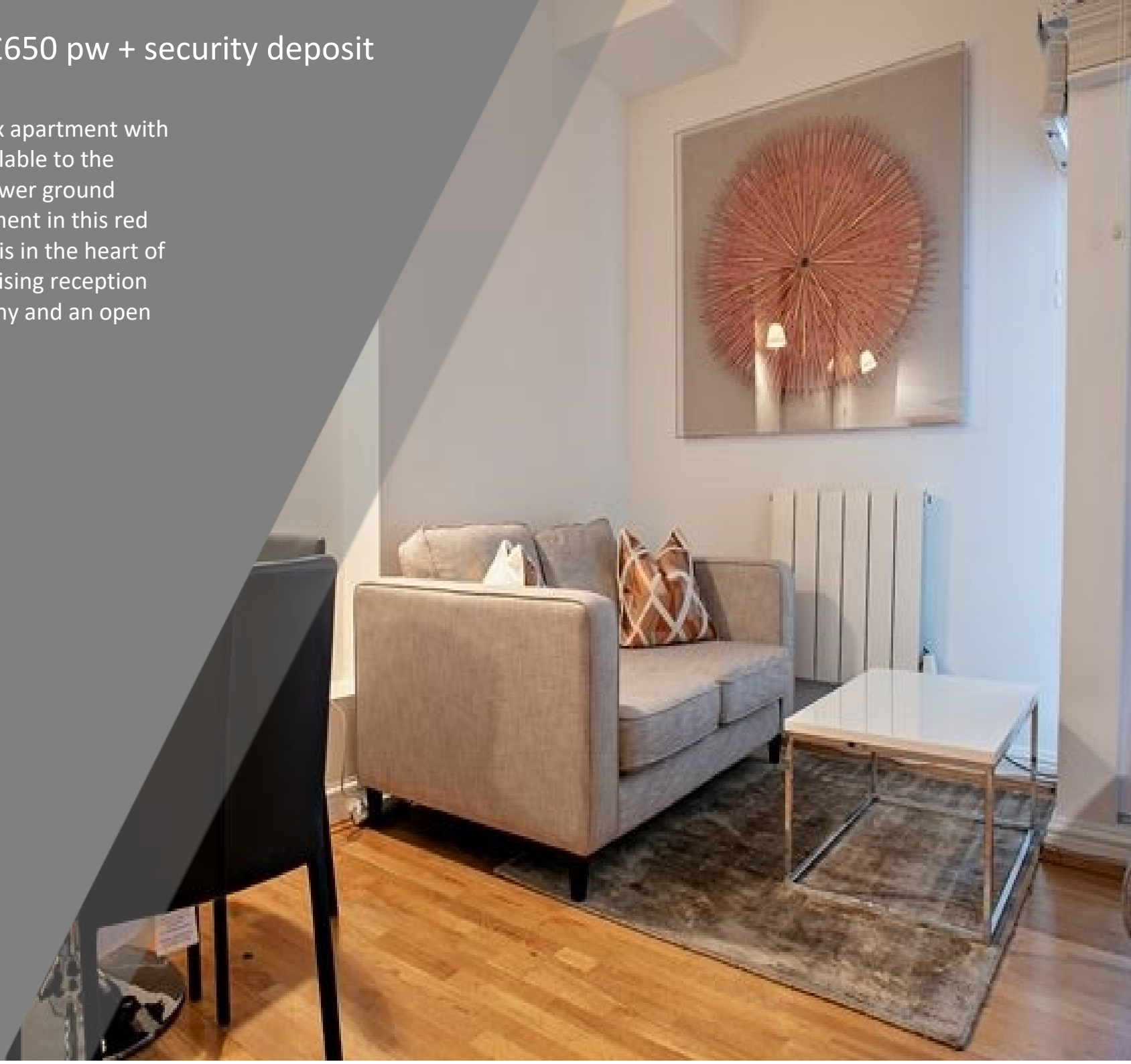

THE
CLOISTER

Marylebone W1U 5LU

2 Bed Furnished Flat

Nottingham Place £650 pw + security deposit

A newly interior designed duplex apartment with private outside space rarely available to the market. This 450 sq ft ground/lower ground floor, one bedroom patio apartment in this red brick period apartment building is in the heart of fashionable Marylebone. Comprising reception room with door to a small balcony and an open plan kitchen.





SUMMARY OF ACCOMMODATION

- Flat
- 1 Bathroom
- Separate WC
- Washing Machine
- 2 Beds
- Furnished
- Porter
- 1 Reception
- Shower
- Lift

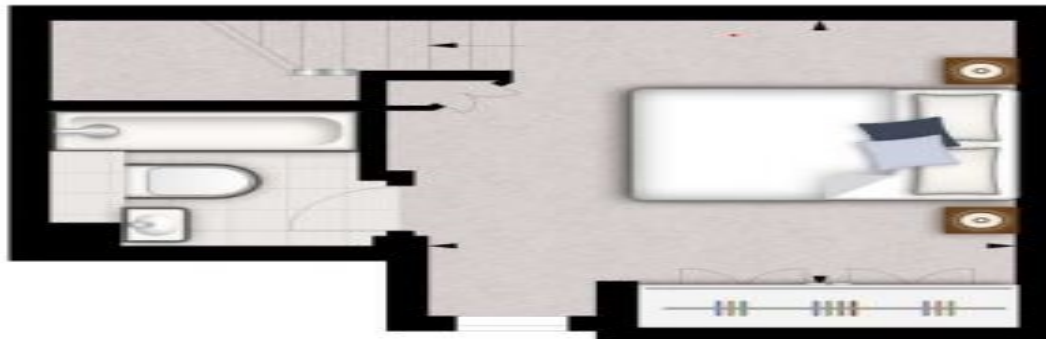




FLOOR PLANS



Ground Floor



Lower Ground Floor



THE
CLOISTER

**64 Knightsbridge
London
SW1X 7JF**

0207 436 6210