



# THE CLOISTER

Bondway, Vauxhall

£6,500,000 Leasehold



## **The Cloister**

106 Great Portland Street, London, W1W 6PF  
T. +44 (0)20 7436 6210 F. +44 (0)20 7436 7261  
E. [lettings@thecloisteruk.com](mailto:lettings@thecloisteruk.com) W. [www.thecloisteruk.com](http://www.thecloisteruk.com)



# Bondway, Vauxhall

## £6,500,000 Leasehold

Introducing a luxurious five bedroom, 3180 sq. ft penthouse with lavish interiors designed by Versace Home.

Situated in the heart of Nine Elms, this new residential tower will bring you the ultimate in branded living experiences.

The unique and balanced architectural composition of stone, terracotta and glass has been carefully crafted to create impressive views from every aspect of the building.

Finished to the highest standards, with stunning communal roof gardens to unwind and meander in.

Within the development, residents will get to enjoy the fantastic facilities which include a state of the art gymnasium, swimming pool, jacuzzi, residents lounge, secure parking (subject to additional price and availability).

---

### **The Cloister**

106 Great Portland Street, London, W1W 6PF  
T. +44 (0)20 7436 6210 F. +44 (0)20 7436 7261  
E. [lettings@thecloisteruk.com](mailto:lettings@thecloisteruk.com) W. [www.thecloisteruk.com](http://www.thecloisteruk.com)



Bondway, Vauxhall  
£6,500,000 Leasehold



**The Cloister**

106 Great Portland Street, London, W1W 6PF  
T. +44 (0)20 7436 6210 F. +44 (0)20 7436 7261  
E. [lettings@thecloisteruk.com](mailto:lettings@thecloisteruk.com) W. [www.thecloisteruk.com](http://www.thecloisteruk.com)



Bondway, Vauxhall  
£6,500,000 Leasehold

---

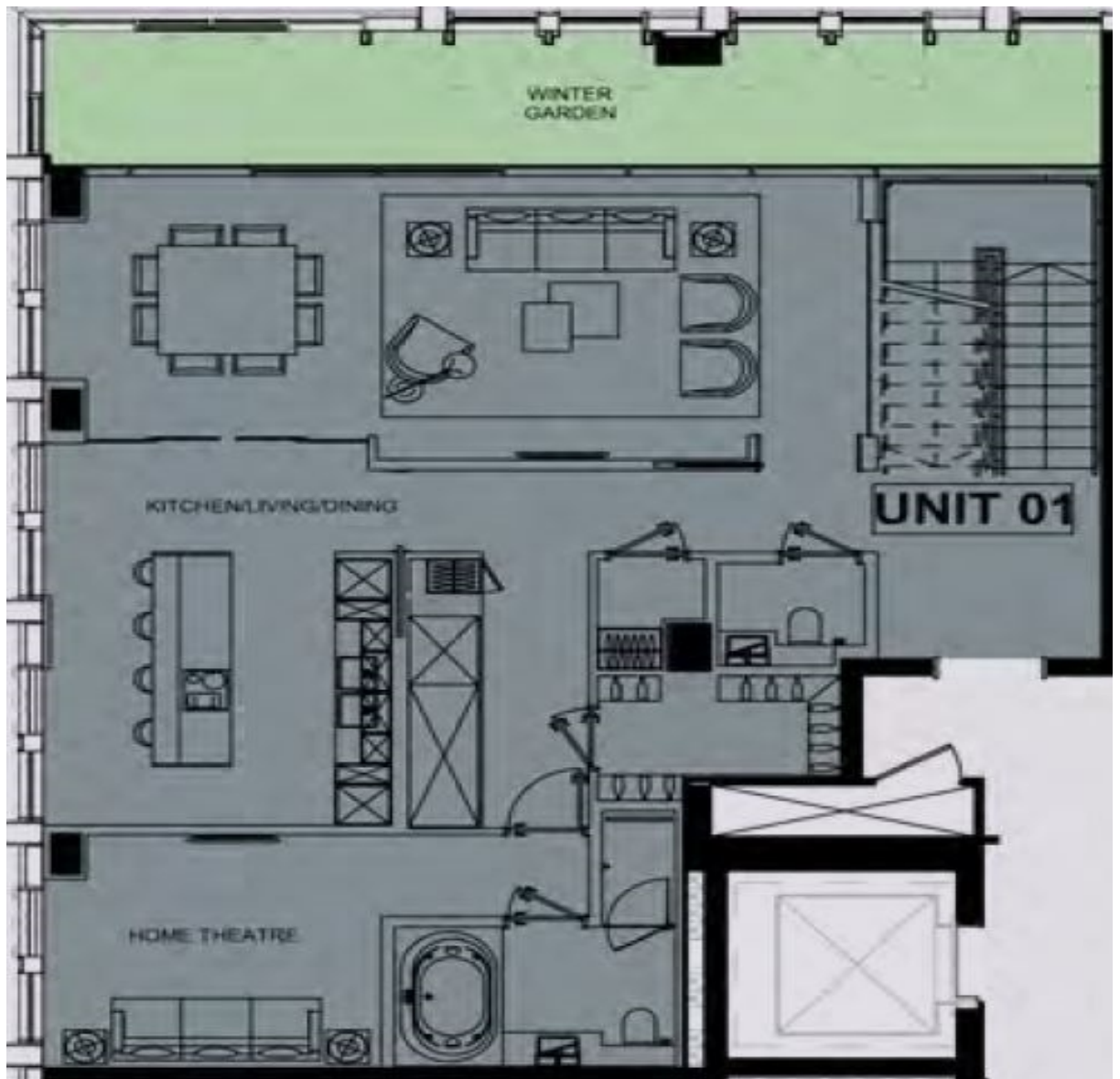
---

**The Cloister**

106 Great Portland Street, London, W1W 6PF  
T. +44 (0)20 7436 6210 F. +44 (0)20 7436 7261  
E. [lettings@thecloisteruk.com](mailto:lettings@thecloisteruk.com) W. [www.thecloisteruk.com](http://www.thecloisteruk.com)



Bondway, Vauxhall  
£6,500,000 Leasehold



**Important Notices:**

Particulars: These particulars are not an offer or contract, nor part of one. You should not rely on statements by The Cloister in the particulars or by word of mouth or in writing ("information") as being factually accurate about the property, its condition or its value. Neither The Cloister nor any joint agent has any authority to make any representations about the property, and accordingly any information given is entirely without responsibility on the part of the agents, seller(s), lessor(s) or landlord(s). Any areas, measurements or distances are approximate. The text, photographs and plans are for guidance only and are not necessarily comprehensive. Regulations etc: Any reference to alterations to, or use of, any part of the property does not mean that any necessary planning, building regulations or other consent has been obtained. A buyer, lessee or tenant must find out by inspection or in other ways that these matters have been properly dealt with and that all information is correct. All items usually known as tenant's fixtures and fittings whether mentioned or not in these particulars are excl

**The Cloister**

106 Great Portland Street, London, W1W 6PF  
T. +44 (0)20 7436 6210 F. +44 (0)20 7436 7261  
E. [lettings@thecloisteruk.com](mailto:lettings@thecloisteruk.com) W. [www.thecloisteruk.com](http://www.thecloisteruk.com)

