



THE CLOISTER

Queen's Gate Terrace, South Kensington

£8,750,000 Leasehold



4 bedrooms, 4 bathrooms and 3 living room property in South Kensington, Chelsea.

The Cloister

106 Great Portland Street, London, W1W 6PF
T. +44 (0)20 7436 6210 F. +44 (0)20 7436 7261
E. lettings@thecloisteruk.com W. www.thecloisteruk.com



Queen's Gate Terrace, South Kensington

£8,750,000 Leasehold

Exquisite residence on Queens Gate Terrace, SW7, boasting four bedrooms, four bathrooms, and three elegantly designed living rooms. This sophisticated home harmoniously blends modern luxury with timeless charm, offering spacious and well-appointed living spaces. Enjoy the epitome of comfort and style in this prestigious London address. Lease term: 975 years on the lease.

The Cloister

106 Great Portland Street, London, W1W 6PF
T. +44 (0)20 7436 6210 F. +44 (0)20 7436 7261
E. lettings@thecloisteruk.com W. www.thecloisteruk.com



Queen's Gate Terrace, South Kensington

£8,750,000 Leasehold



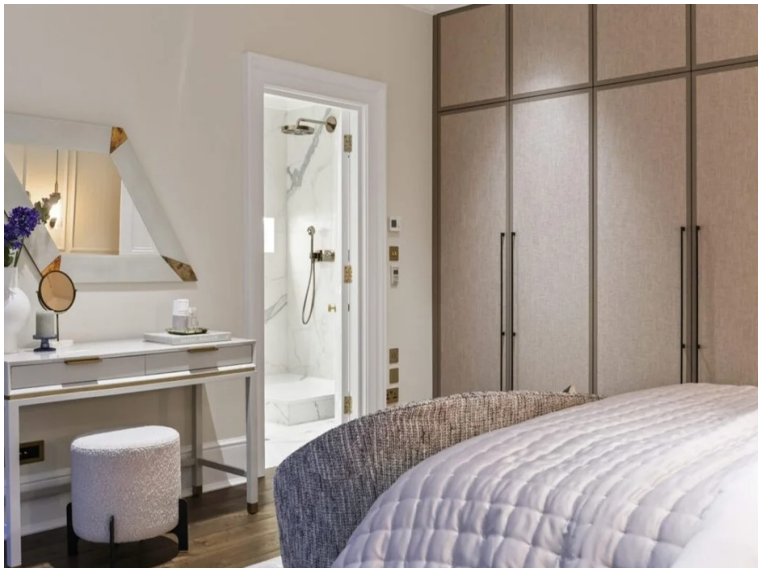
The Cloister

106 Great Portland Street, London, W1W 6PF
T. +44 (0)20 7436 6210 F. +44 (0)20 7436 7261
E. lettings@thecloisteruk.com W. www.thecloisteruk.com



Queen's Gate Terrace, South Kensington

£8,750,000 Leasehold



The Cloister

106 Great Portland Street, London, W1W 6PF
T. +44 (0)20 7436 6210 F. +44 (0)20 7436 7261
E. lettings@thecloisteruk.com W. www.thecloisteruk.com



Queen's Gate Terrace, South Kensington

£8,750,000 Leasehold

Important Notices:

Particulars: These particulars are not an offer or contract, nor part of one. You should not rely on statements by The Cloister in the particulars or by word of mouth or in writing ("information") as being factually accurate about the property, its condition or its value. Neither The Cloister nor any joint agent has any authority to make any representations about the property, and accordingly any information given is entirely without responsibility on the part of the agents, seller(s), lessor(s) or landlord(s). Any areas, measurements or distances are approximate. The text, photographs and plans are for guidance only and are not necessarily comprehensive. Regulations etc: Any reference to alterations to, or use of, any part of the property does not mean that any necessary planning, building regulations or other consent has been obtained. A buyer, lessee or tenant must find out by inspection or in other ways that these matters have been properly dealt with and that all information is correct. All items usually known as tenant's fixtures and fittings whether mentioned or not in these particulars are excl

The Cloister

106 Great Portland Street, London, W1W 6PF
T. +44 (0)20 7436 6210 F. +44 (0)20 7436 7261
E. lettings@thecloisteruk.com W. www.thecloisteruk.com

