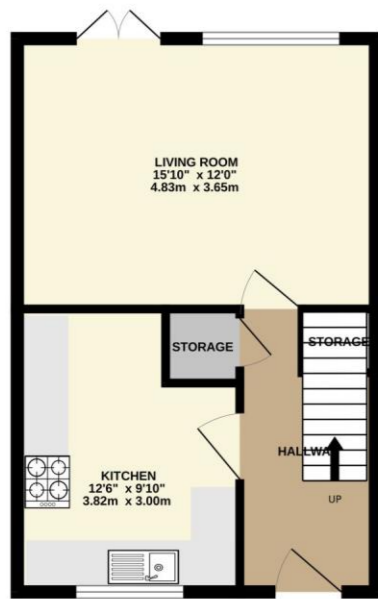
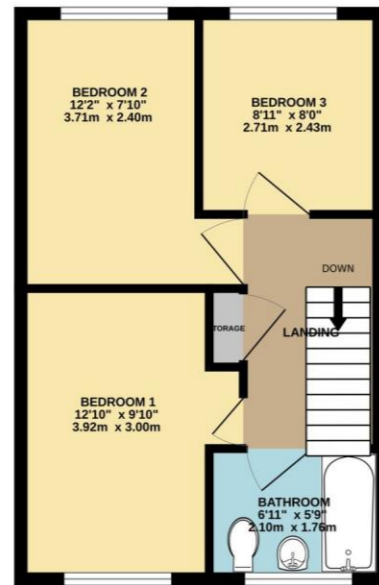


GROUND FLOOR
388 sq.ft. (36.1 sq.m.) approx.



1ST FLOOR
397 sq.ft. (36.9 sq.m.) approx.



TOTAL FLOOR AREA: 785 sq.ft. (72.9 sq.m.) approx.
Whilst every attempt has been made to ensure the accuracy of the floorplan contained here, measurements of doors, windows, rooms and any other items are approximate and no responsibility is taken for any error, omission or mis-statement. This plan is for illustrative purposes only and should be used as such by any prospective purchaser. The services, systems and appliances shown have not been tested and no guarantee as to their operability or efficiency can be given.
Made with Metropix ©2023

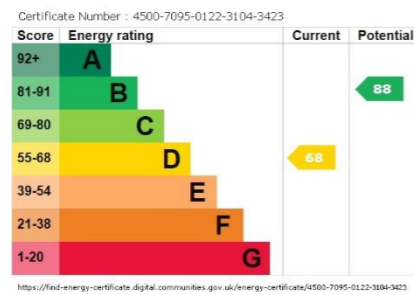


Image Not Available

Hearne Close

Sittingbourne, Sittingbourne, Kent, ME10 3QB



Family Homes, 25a West Street,
Sittingbourne, Kent, ME10 1AL
01795 473434
sales@familyhomes.co.uk



Offers in the region of
£235,000



Hearne Close

Sittingbourne, Sittingbourne, Kent, ME10 3QB

Description

CHAIN FREE, IDEAL FIRST HOME, QUIET WALKWAY LOCATION, 2 MILES TO MAINLINE TRAIN STATION, CLOSE TO LOCAL SCHOOLS!

This charming 3 bedroom terraced house is located in the desirable residential area of Hearne Close, Sittingbourne. The property boasts a spacious living room, well equipped kitchen, and three well-proportioned bedrooms, making it an ideal home for families or first-time buyers.

Hearne Close is a quiet residential walkway providing easy access to local amenities and transport links. The town centre is within a short car ride, offering a range of shops, restaurants, and entertainment options. The nearby mainline train station provides regular services to London and other parts of Kent, making it an excellent choice for commuters.

The property is a well-presented terraced house featuring a low maintenance rear garden and laid to lawn front garden overlooking the walkway. The walkway offers additional greenery that can act as an extended garden.

Upon entering the property, you are greeted by a spacious hallway leading to the living room. The room features a comfortable seating area, space for dining, and a TV point, making it an ideal space for relaxation and entertaining. The adjoining kitchen is well-equipped, featuring a range of wall and base units, room for appliances, and ample workspace.

The three bedrooms are all well-proportioned and carpeted, providing a comfortable sleeping space. All bedrooms utilise the modern bathroom which is mostly tiled with white suite comprising basin, toilet and shower over bath.

The property is located within a short drive of Sittingbourne's town centre, which offers a range of amenities including shops, supermarkets, restaurants, and leisure facilities. The nearby train station provides regular services to London and other parts of Kent, making it an excellent choice for commuters. Additionally, the property is located near several schools, including The Sittingbourne School and Sunnybank Nursery and Primary school.

This charming 3 bedroom terraced house in Hearne Close, Sittingbourne is an excellent choice for families or first-time buyers looking for a comfortable and convenient home. With its spacious living room, practical kitchen, and well-proportioned bedrooms, the

Room Sizes

